



**STACK
STACK[®]
STACK**

**WORLD CLASS
INSTRUMENTATION**

Pro-Control Stepper Motor Analogue Gauges

Stack's Pro-Control range of Professional Stepper Motor Analogue Gauges brings total control and driver awareness of critical engine functions.

The Pro-Control series has all of the features of the Professional Stepper Motor Analogue Gauges (see right) plus:

- Peak Values recall
- Configurable Max full dial alarm warnings
- Temperature gauges with built-in "fan controller"
- Configurable Pro-Control output for activating accessories eg. fans, pumps, etc (requires relay)
- Temperature gauges with built-in "fan controller"
- Pressure gauges with built-in "pump controller"
- Configurable backlight colour
- Black dialface when powered off

FULL-DIAL ALARM WARNING



User-configurable minimum and maximum alarms can be set, with one of seven different colours assigned to each. As soon as an alarm level is exceeded, the full dialface changes colour.

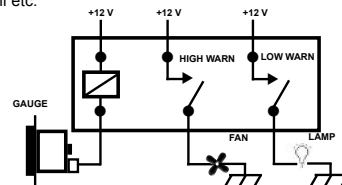
UNRIVALLED ACCURACY

Precision stepper-motor needle movements and solid-state sensors ensure better than 2% accuracy.



PRO-CONTROL FEATURE (EG. BUILT-IN FAN CONTROLLER)

The Pro-Control feature activates low and high outputs whenever the user-defined alarm levels are exceeded. Pro-control outputs can be used to switch a relay to activate cooling fans, pumps, lamps, alarms, ignition kill etc.



CONFIGURABLE LED BACKLIGHT COLOUR

With a choice of 7 user-selectable LED backlighting colours (white, red, yellow, green, blue, purple and turquoise) the user can choose the optimum colour for maximum visibility and readability of the gauge, day and night.

PEAK RECALL

Press and hold the PEAK button to recall on the dial the highest temperature since the memory was last reset.



OIL PRESSURE
0-7 BAR ST3501
0-100 PSI ST3502



FUEL PRESSURE (LOW)
0-1 BAR ST3503
0-15 PSI ST3504



FUEL PRESSURE (HIGH)
0-7 BAR ST3505
0-100 PSI ST3506



WATER TEMPERATURE
40-120°C ST3507
100-260°F ST3508



OIL TEMPERATURE
40-140°C ST3509
140-280°F ST3510



BOOST PRESSURE
-1.0 to +2.0 BAR ST3511
-30inHg to +30 PSI ST3512



EXHAUST GAS TEMPERATURE
0-1100°C ST3513
0-2000°F ST3514



FUEL LEVEL*
Programmable ST3515



BATTERY VOLTAGE
8-18 V ST3516

SENSORS & WIRING HARNESS INCLUDED

All Stack Pro-Control Stepper Motor Analogue Gauges come complete with wiring harness and associated solid-state sensor (except for Fuel Level and Battery Volts).

* Fuel Level gauge has 7 preset ranges and a universal-programmable calibration to suit all normal tank sensors with a resistance range of 0-280 ohms.

Wideband Air/Fuel - Lambda Digital Gauges

This is the ultimate tuning aid! Dual digital and radial LED displays provide accurate real-time readout of either air/fuel ratio or lambda (user-selectable).

A 0-4 Volt analogue output can be connected to a data-logger or to an ECU to provide real-time closed-loop feedback for improved mapping.

Supplied complete with wiring harness and includes Bosch Wideband sensor.

- Black Dial Face ST3401
- White Dial Face ST3402



- 0-4 Volt analogue output to feed a data acquisition unit or engine management system.
- User-selectable Air/Fuel or Lambda real time display.
- Programmable Alarm warns of dangerous lean condition.
- Peak Recall of leanest value during last run.
- Selectable for all fuel types with AFR from 6:1 to 20:1.

Professional Stepper Motor Analogue Gauges

These auxiliary instruments combine digital microprocessor timing with a high-precision stepper motor needle movement, to provide a new level of accuracy and reliability in 52mm gauges. They combine the durability and readability of 270° mechanical gauges with the easy installation and safe operation of conventional electric gauges. The full sweep dialface together with white LED through the dial backlighting and illuminated needle ensure excellent readability day or night.

WHITE & SILVER DIAL FACE OPTIONS ON SELECTED GAUGES!

By popular demand, selected gauges across the range are available with white or silver dial faces, white LED backlighting and orange illuminated needle.



52MM GAUGE MOUNTS

Stack's new Gauge Roll Pods and Pedestal Mounts are the perfect solution for mounting 52mm Gauges for optimum driver visibility.

The heavy-duty Roll-Pods are vibration resistant, and will hold the gauges in a variety of positions.

Stack's Pedestal Mounts mean gauges can be mounted on the dash, under the dash or on the steering column.



(ST264803) **Roll Pod (40mm roll cage)**
(ST262121) **Carbon Fibre Pedestal Mount**
(ST264809) **Standard Pedestal Mount**



OIL PRESSURE
0-7 BAR **BLACK** ST3301
WHITE ST3351
SILVER ST3371
0-100 PSI **BLACK** ST3302
WHITE ST3352
SILVER ST3372



FUEL PRESSURE (LOW)
0-1 BAR **BLACK** ST3303
WHITE ST3353
0-15 PSI **BLACK** ST3304
WHITE ST3354



FUEL PRESSURE (HIGH)
0-7 BAR **BLACK** ST3305
WHITE ST3355
SILVER ST3375
0-100 PSI **BLACK** ST3306
WHITE ST3356



WATER TEMPERATURE
40-120°C **BLACK** ST3307
WHITE ST3357
SILVER ST3377
100-260°F **BLACK** ST3308



OIL TEMPERATURE
40-140°C **BLACK** ST3309
WHITE ST3359
SILVER ST3379
140-280°F **BLACK** ST3310



BOOST PRESSURE
-1.0 - +2.0 BAR **BLACK** ST3311
WHITE ST3361
SILVER ST3381
-30inHg - +30 PSI **BLACK** ST3312



EXHAUST GAS TEMPERATURE
0-1100°C **BLACK** ST3313
WHITE ST3363
SILVER ST3383
0-2000°F **BLACK** ST3314



FUEL LEVEL*
PROGRAMMABLE **BLACK** ST3315
WHITE ST3365
SILVER ST3385



BATTERY VOLTAGE
8-18 V **BLACK** ST3316
WHITE ST3366
SILVER ST3386



ANALOG CLOCK
12 hour **BLACK** ST3317
WHITE ST3367
SILVER ST3387

* Fuel Level gauge has 7 preset ranges and a universal-programmable calibration to suit all normal tank sensors with a resistance range of 0-280 ohms.
All Stack 52mm Professional gauges come complete with wiring harness and associated solid-state sensor (except for Fuel Level and Battery Volts).

Electric Gauges

These electric auxiliary instruments feature advanced 90° air-core movements and simple 3-wire installation. Electrical sensors keep hazardous fluids in the engine compartment.

White LED back-lighting and illuminated needle ensure excellent readability day or night.

Supplied complete with associated sensor (wiring not included).



OIL PRESSURE
0-7 BAR **BLACK** ST3201
WHITE ST3251
SILVER ST3271
0-100 PSI **BLACK** ST3202
WHITE ST3252



WATER TEMPERATURE
40-120°C **BLACK** ST3207
WHITE ST3257
SILVER ST3277
100-250°F **BLACK** ST3208



OIL PRESSURE
0-7 BAR **BLACK** ST3101
0-100 PSI **BLACK** ST3102



OIL TEMPERATURE
60-150°C **BLACK** ST3209
WHITE ST3259
SILVER ST3279
140-300°F **BLACK** ST3210



BOOST PRESSURE
0 - 2.5 BAR **BLACK** ST3211
WHITE ST3261
SILVER ST3281
0-35 PSI **BLACK** ST3212



BATTERY VOLTAGE
8-18 V **BLACK** ST3216
WHITE ST3266
SILVER ST3286



WATER TEMPERATURE
50-115°C **BLACK** ST3107
120-240°F **BLACK** ST3108



BOOST PRESSURE
-1.0 - +2.0 BAR **BLACK** ST3111
WHITE ST3161
SILVER ST3181
-30inHg - +30 PSI **BLACK** ST3112
WHITE ST3162

Mechanical Gauges

This range of gauges have been specially designed for vehicles with no or low powered electrical systems. Bronze bourdon tube 270° sweep movement.

White LED back-lighting and illuminated needle ensure excellent readability day or night.

Supplied complete with associated sensor (wiring not included).

Clubman Tachometer

For the serious performance enthusiast, the 80mm sized Clubman features the unique, extremely rugged STACK stepper-motor movement, with Digital Quartz accuracy for unparalleled precision.

- Configurable for all negative earth and magneto ignition systems.
- Unique Stack Stepper-Motor Needle Movement.
- Unrivalled Digital Quartz accuracy guaranteed for life.
- Peak RPM 'Tell-Tale' memory.
- User adjustable shift light option (lamp not included).
- Exceptional reliability.
- Fully sealed against water and dust to IP67.
- Fits standard 80mm cut outs.
- Supplied with mounting bracket, switch kit, and user manual.
- Maintenance free White LED backlighting on all ST200.
- 1 year Competition Warranty.

(ST200)



CHOOSE FROM A RANGE OF RPM SCALES AND WHITE OR BLACK DIAL FACES

Non-standard dial faces available at extra cost, please call for details.



0-8,000 RPM
(Black or White)



0-4-10,500 RPM
(Black or White)



0-6-15,000 RPM
(Black or White)

OPTIONAL SHIFT LIGHTS



Panel Mount Red Shift Light
(ST537)

Dash Top Mount Red Shift Light
(ST534)

Classic Tachometers

Combining the best in modern technology with "Classic" styling to complement the car's original design.

Chronotronic™ 80mm Tachometers

- Accurate replica of original chronometric tachometer.
- Stepper-Motor Needle Movement re-creates 'chronometric' motion to 4000rpm.
- Chromed brass bezel.
- Maintenance-free white LED flood lighting.
- 0-10000 RPM dial face.
- Peak RPM 'Tell-Tale' memory.
- User adjustable shift light (lamp not included).
- Fully sealed against water and dust to IP67.
- 1 Year Competition Warranty.
- Configurable for all negative earth and magneto ignition systems.



(ST901096)

ST200 Classic Tachometers

Features classic styling and no backlighting. Other features as ST200, available in two sizes:

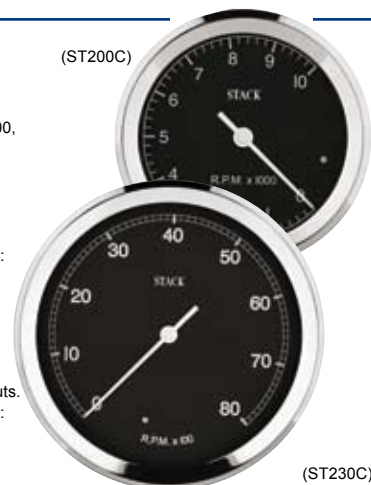
ST200C 80mm Classic Tachometer

Fits standard 80mm cut out.
Choose from a range of RPM scales:
0-8000 0-10000 0-12000
(ST200C)

ST230C 125mm Classic Tachometer

Fits standard 80mm & 115mm cut outs.
Choose from a range of RPM scales:
0-6000 0-8000
(ST230C)

(ST200C)



(ST230C)

Action Replay Tachometers

The Action Replay Tachometer provides the ideal introduction to data recording for oval, sprint, hill-climb and drag racing. The engine RPM for the last run (up to 25 mins) is recorded in a solid-state memory, and at the touch of a button can be re-played via the needle on the dial. 'Re-live' your last run as many times as you like, review your shift points, gearing and maximum RPM around the track with fast and slow modes to aid analysis.

- Unique Stack Stepper-Motor Needle Movement.
- Peak RPM 'Tell-Tale' memory.
- Maintenance free backlighting.
- Unrivalled digital quartz accuracy guaranteed for life.
- User adjustable shift light (included)
- Configurable for all negative earth ignition systems.
- 1 Year Competition Warranty.
- Supplied with mounting bracket, switch kit, removable professional wiring harness, shift light and manual.

(ST400)



(ST430)

ST400 80mm Tachometers

- Fits standard 80mm cut outs.
 - Choose from a range of RPM scales:
- | | |
|-----------|------------|
| 0-8000 | 0-6-13000 |
| 0-3-8500 | 0-10-20000 |
| 0-4-10500 | |
| 0-5-12000 | |

ST430 125mm Tachometers

- Monster 125mm (5") dial face.
 - Fits standard 80mm & 115mm cut outs.
 - Choose from a range of RPM scales:
- | | |
|---------|-----------|
| 0-8000 | 0-6-13000 |
| 0-10000 | |

Professional Speedometer



Stack's Speedometers match our range of Professional Stepper Motor and Pro-Control gauges. Simple wiring connections and easy to use push button programming make installation and calibration simple. Compatible with most OE vehicle speed sensors, as well as aftermarket speed pulse generators. Includes backlit odometer and two resettable tripmeter displays.

- Fully user programmable.
- LCD odometer with a resettable trip displays.
- Maintenance free through the dial white LED backlighting.
- LED illuminated needle for maximum visibility.
- Available in black or white dial faces.
- Fits 85mm cutouts.
- Optional sensors available for some cable-drive applications.

ST3801 0-160 MPH/0-260 km/h (Black)

ST3851 0-160 MPH/ 0-260 km/h (White)

ST3802 0-260 km/h (Black)

ST3852 0-260 km/h (White)

ST700 Dash Display

The ST700 Dash Display systems integrate tachometer, sequential shift light and voltmeter in a single 80mm instrument. Standard options include speedometer, lap timer and two pressure or temperature. In addition the ST700 can be fitted with a range of performance options, including an acceleration timer, infrared lap timing system, split time memory and straight and corner speed readout. Standard features include:

- Adjustable day & night backlighting levels to suit ambient light conditions.
- Fully sealed against water and dust to IP67.
- Peak value 'Tell-Tale' memory is provided on all monitored parameters.
- Configurable for all vehicle types and negative earth ignition systems.
- Supplied with mounting bracket, switch kit, separate professional wiring loom and manual.
- 1 year Competition Warranty.



STACK
STACK
STACK

Dash Displays



0-8000 RPM

Standard (Black or White)



0-4-10500 RPM

Standard (Black or White)



0-6-15000 RPM

Standard (Black or White)



0-10750 RPM

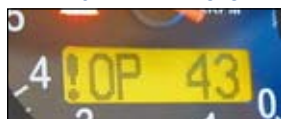
Optional (Black or White)



0-3-13000 RPM

Optional (Black or White)
(Cost Option)

INTELLIGENT ALARM SYSTEM



Intelligent alarms are provided on all of the monitored parameters. Alarm levels are adjustable to suit the individual vehicle requirements.

NEUTRAL GEAR INDICATOR



The dash can be simply connected to the neutral position switch of any sequential gear box - requires ST918051 harness.

SEQUENTIAL SHIFT LIGHT



Ultra bright LED's that can be set to operate in 4 different shift light patterns - Sequential, Sequential Blink, Bar and Simultaneous modes. Each light can be set independently; brightness adjustable to suit light conditions.

CONFIGURABLE INPUTS



The ST700 features two configurable channels that can be set up for a pressure (oil, fuel, boost or general purpose) or a temperature (oil, water, differential, axle or general purpose). Choose between standard and solid state sensor options.

ST700 OPTIONAL PERFORMANCE FEATURES

(Standard on some models)

LAP TIMING SYSTEM



The lap timing receiver simply plugs into the standard dash wiring harness. Each time the vehicle passes the track side beacon the lap time "pops up" on the graphic display to an accuracy of 1/100th of a second.

(ST546) **OPTION**

LAP & SPLIT TIME MEMORY



This feature records 75 Lap and Split Times (if Split Timing is activated) to help the driver evaluate their consistency.

(ST7090) **OPTION**

PERFORMANCE UPGRADE



Consists of the Split Time system and the Straight and Corner Speed readout options; providing real-time information that allows the driver to evaluate their own performance. Requires ST670 Speed Sensor and ST546 Lap Timing system.

(ST7093) **OPTION**

ACCELERATION TIMER

This feature will record Standing 1/4 mile/400m time, and acceleration/deceleration time between any chosen speeds. Requires ST670 Speed Sensor.

(ST7095) **OPTION**

SPEEDOMETER, ODOMETER & TRIPMETER

This option provides a street legal speedometer display readout with trip and odometer. The user can select MPH or km/h and miles or kilometres. Requires ST670 Speed Sensor.

(ST7094) **OPTION**

SPEED SENSOR

Simply plug this sensor into the wiring loom to display speed on the LCD readout.

(ST670) **OPTION**

Model	Speed (ST670)	RPM	Batt.	2x Config. Channels*	Neutral Indicator** (ST918051)	Lap Time (ST546)	Lap Memory (ST7090)	Perf. Upgrade (ST7093)	Accel. Timer (ST7095)	Odometer (ST7094)
ST700	OPTION	✓	✓	✓	OPTION	OPTION	OPTION	OPTION	OPTION	OPTION
ST700M	✓	✓	✓	✓	OPTION	✓	✓	✓	OPTION	OPTION
ST700SR	✓	✓	✓	✓	OPTION	OPTION	OPTION	OPTION	✓	✓

*Analog channels require optional Analog Sensor Harness (ST918049) **Neutral Indicator harness requires Analog Sensor Harness (ST918049)

ST700 SENSOR OPTIONS

(Note: these are not included with the dash system and must be ordered separately, with ST918049 Sensor Harness.)

Solid-State Sensors	10 bar/150 PSI Pressure Sensor	M10 (ST747-M10)	1/8" NPTF (ST747-1/8"NPTF)
	-20 to 150 °C Temperature Sensor	M6 x 1 (ST769)	
	0 to 3.5 bar/50 PSI Boost Sensor		1/8" NPTF (ST740)
Standard Sensors	10 bar/150 PSI Pressure Sensor	M10 (ST744K)	1/8" NPTF (ST745K)
	-20 to 50 °C Air Temp Sensor	M10 (ST765K)	

Integrated Dash Display Systems

The ST800 Dash Display System replaces all dashboard instruments - tachometer, oil pressure gauge, fuel pressure gauge, water temperature gauge, oil temperature gauge and voltmeter - with a single lightweight carbon composite display module.

OPTIONAL SEQUENTIAL SHIFT LIGHT MODULE



All Stack Dash Displays can drive the new Sequential Shift Light Module. Using the display menus, each of the 5 shift lights can be independently programmed to a specific RPM value, to provide complete flexibility. The Sequential Shift Light connects to the dash harness with just 3 wires, and is ideal for dash-top mounting. (ST539)

LIGHTWEIGHT CARBON COMPOSITE HOUSING

Fully sealed against water and dust to IP67 for maximum reliability year after year.

BRIGHT WHITE LED BACKLIGHTING

ensures clear viewing day and night.

ANALOGUE TACHOMETER

The preferred choice of most racers.

WIDE CHOICE OF DIAL FACES

See Dial Face section below for more information.

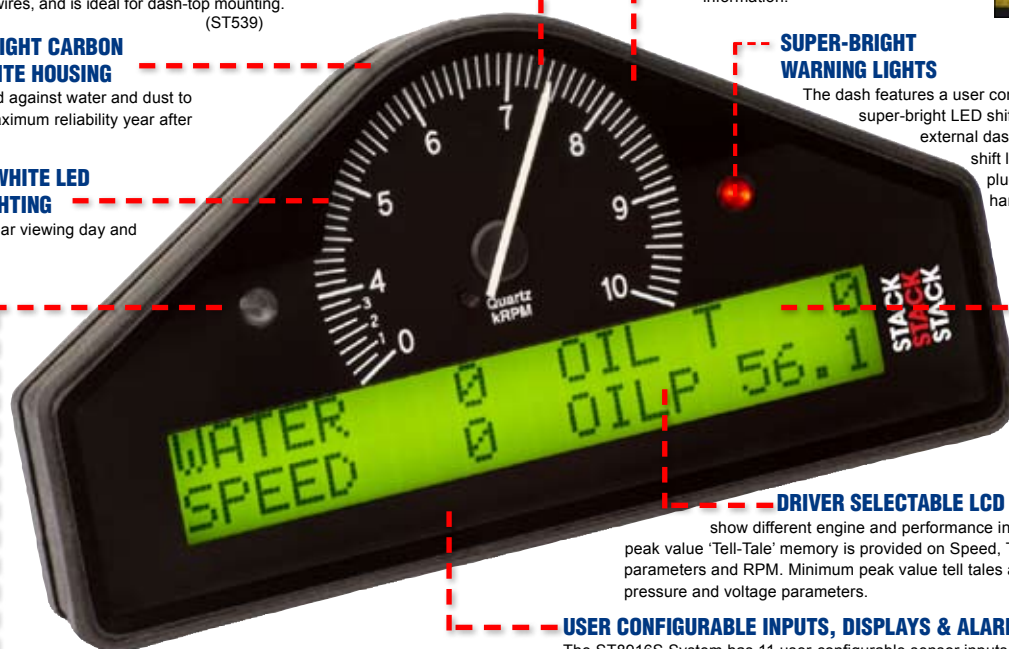


SUPER-BRIGHT WARNING LIGHTS

The dash features a user configurable and built-in, super-bright LED shift light. Additionally, an external dash top or panel mount shift light can be simply plugged into the dash harness.

BACK-LIT DISPLAY

Clear viewing under all lighting conditions



INTELLIGENT ALARMS



Provided on all monitored parameters. Alarm levels are user adjustable to suit individual vehicle requirements. An internal alarm light is standard and an optional external light can simply be plugged into the dash harness.

DRIVER SELECTABLE LCD DISPLAY LAYERS

show different engine and performance information. Maximum peak value 'Tell-Tale' memory is provided on Speed, Temperature parameters and RPM. Minimum peak value tell tales are provided on pressure and voltage parameters.

USER CONFIGURABLE INPUTS, DISPLAYS & ALARMS

The ST8916S System has 11 user-configurable sensor inputs and optional CAN ECU interface for maximum flexibility. The LCD display layers and alarms are also fully configurable (PC required for configuration).

HIGH ACCURACY SOLID-STATE PRESSURE & TEMPERATURE SENSORS

The solid-state pressure and temperature sensors are smaller, lighter, more accurate and more reliable. Solid-state pressure sensor (ST747) supplied as standard with all ST800 Dash Display Systems.



ACTION REPLAY DASH DISPLAY



Specifically designed to offer an alternative to PC-based data acquisition systems, the Action Replay Dash Display provides the ideal introduction to multi-channel data recording for oval, sprint, hillclimb and drag racing.

Record your RPM, speed*, temperatures, pressures and lap times* on the track. Back in the pits, you can replay the data on the Dash Display, showing the values for every point on the track.

The 'M' model provides the ultimate feedback tool, by replaying the Performance Meter & Predictive Lap Time to display exactly how much time was gained/lost, and where on the track.

- Replay of all engine parameters, and optionally speed & lap times*
- Replay Performance Meter & Predictive Lap Time data (M model only).
- Alarms and lap times pop-up on the display as they did while on-track.
- Records up to 15 runs, and up to 2 hours of data.
- Upgrade to full data logging with optional PC download/ software kit

(ST8100-AR / ST8100M-AR)

* Requires optional sensor at extra cost (ST8100M-AR only).

See Performance Features section on opposite page for more information.

DASH DISPLAY SYSTEMS FOR STREET & TRACK DAY



(ST8130/ST8130P/ST8130M/ST8110SR)

These systems are designed for vehicles and motorcycles which must meet road legal requirements, and feature speedometer, odometer and trip meter. Each system includes all sensors (except fuel level sensor), mounting kit, switch kit, and professional ready-wired loom.

DIAL FACE OPTIONS

All models come with White LED backlighting as standard.

	0-3000 RPM	0-3-8000	0-4-10000	0-3-10500	0-6-13000	0-3-8000 Inverted	0-4-10000 Inverted	0-6-13000 Inverted	0-10-22000**	0-8000 White	0-3-8000 White**	0-6-13000 White**
ST8100-UK	✓	✓	✓	✓	✓	✓	✓	✓	✓			
ST8100M-UK	✓	✓	✓	✓	✓	✓	✓	✓	✓			
ST8100-AR-UK	✓	✓	✓	✓	✓	✓	✓	✓	✓			
ST8100M-AR-UK	✓	✓	✓	✓	✓	✓	✓	✓	✓			
ST8130-UK	✓	✓	✓	✓	✓					✓	✓	✓
ST8130P-UK	✓	✓	✓	✓	✓					✓	✓	✓
ST8130M-UK	✓	✓	✓	✓	✓					✓	✓	✓
ST8110SR-UK	✓	✓	✓	✓	✓					✓	✓	✓
ST8916S	✓	✓	✓	✓	✓	✓	✓	✓				

**Extra cost options add



(ST8600/ST8600M)

The ST8600 Steering Wheel Display System replaces all dashboard instruments - tachometer, speedometer, gear number, pressure and temperature gauges, voltmeter and lap timing. The design uses the latest LED technology and is specially designed for vehicles such as Formula cars where a conventional dash system cannot be easily fitted. Fully compatible with Stack Data Acquisition Systems.

Standard features include:

- Alarms and Peak Value Recall on all engine parameters.
- Gear display from gearbox sensor or automatic calculation from speed/RPM.
- High accuracy solid-state pressure and temperature sensors.
- Fully configurable without a PC.
- High intensity LED's ensure easy readability.
- Military specification connectors.
- Supplied complete with control module, all sensors and harnesses.
- Fully compatible with the range of Stack Data Acquisition systems.



SATELLITE DISPLAY SYSTEM

Where space allows, the Steering Wheel Display System is now available as a Satellite display system for dash fitting. (ST8610/ST8610M)

COLOUR LED READOUTS ENHANCE READING 'AT A GLANCE'

Separate red and green LED readouts enable the driver to instantly identify specific information of interest.



9 STAGE SEQUENTIAL SHIFT LIGHT/TACHOMETER

The 9 sequentially illuminated ultra-bright shift lights provide a precise indication of engine RPM, and rate of change of RPM, enabling the driver to perfectly anticipate gear shift points.



Model	Speed (ST670)	RPM	Oil Pressure	Fuel Pressure	Water Temp.	Oil Temp.	Gear No.	Lap Time	Lap No.	Lap Timing (ST546)	Performance Meter	Predict. Lap Readout
ST8600	OPTION	✓	✓	✓	✓	✓	✓ [1]	✓ [2]	✓ [2]	OPTION	OPTION	
ST8600M	✓	✓	✓	✓	✓	✓	✓ [1]	✓	✓	✓	✓	✓
ST8610	OPTION	✓	✓	✓	✓	✓	✓ [1]	✓ [2]	✓ [2]	OPTION	OPTION	
ST8610M	✓	✓	✓	✓	✓	✓	✓ [1]	✓	✓	✓	✓	✓

[1] Requires appropriate gear position sensor or ST670 Speed Sensor. [2] Requires manual (ST5097) or infra-red (ST546) lap timing kit. Standard steering wheel sizes - 270mm, 340mm

PERFORMANCE FEATURES FOR DASH DISPLAY SYSTEMS

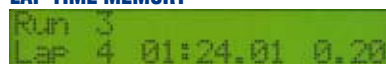
(Standard on some models)



SPEED SENSOR

Simply plug this speed sensor into the wiring loom to enable speed to be displayed on the LCD readout. (ST670)

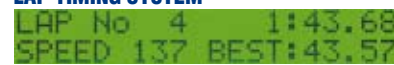
LAP TIME MEMORY



Available on the ST8100M and ST8100M-AR Systems only, this feature records every lap by session. Once back in the pits, the driver can review each lap time, starting at the fastest lap, on the LCD display.

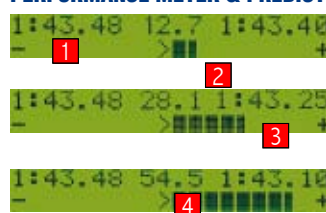


LAP TIMING SYSTEM



The lap timing receiver simply plugs into the standard dash wiring harness. When the vehicle passes the track side beacon the lap time "pops up" in the graphic display with an accuracy of 1/100th of a second. At any time the driver can select the Lap Time Display layer to show the Last Lap Time, Best Lap Time and number of laps driven.

PERFORMANCE METER & PREDICTIVE LAP TIMING SYSTEM



1	Best Previous Lap Time: Displays the fastest previous lap time.	Enables the driver to experiment with different lines through corners, with immediate visual feedback
2	Running Lap Time: Displays the time into the current lap.	Enables the driver to optimise qualifying, by giving early prediction of a fast lap, or a lap off the pace, which should be aborted.
3	Predicted Lap Time: Displays the current prediction of the next lap time.	Shows potential lap time when the driver cannot get a clear flag to flag lap in.
4	Performance Meter: Graphically displays the time difference between the current and best lap as an easy to read bar graph.	Functions as an in-car coach, continually setting pace for the driver to beat, and displaying how much time is lost each time a mistake is made.

DISPLAY OPTIONS

	For Circuit racing	For Rallying	For Street/Road Racing	Total Inputs	RPM	Fuel Level	Speed (ST670)	Odometer & Tripmeter	Oil Pressure	Fuel Pressure	Water Temperature	Oil Temperature	Boost Pressure	Battery Voltage	CAN ECU Link Option	Sequential Shift Light (ST539)	Lap Timing (ST546)	Lap Memory	Predictive Lap Timer Display	Performance Meter Display	Action Replay Memory	PC Download Kit (ST8185)
ST8100-UK	✓	✓		8	✓		OPTION		✓	✓	✓	✓		✓		OPTION	OPTION					
ST8100M-UK	✓	✓		8	✓		✓		✓	✓	✓	✓		✓		OPTION	✓	✓	✓	✓		
ST8100-AR-UK	✓	✓		8	✓		OPTION		✓	✓	✓	✓		✓		OPTION	OPTION				✓	OPTION
ST8100M-AR-UK	✓	✓		8	✓		✓		✓	✓	✓	✓		✓		OPTION	✓	✓	✓	✓	✓	OPTION
ST8130-UK		✓	✓	8	✓	✓	✓	✓	✓	OPTION	✓	✓		✓		OPTION	OPTION					
ST8130P-UK		✓	✓	8	✓	✓	✓	✓	✓	✓	✓	✓		✓		OPTION	OPTION					
ST8130M-UK		✓	✓	8	✓	✓	✓	✓	✓	✓	✓	✓		✓		OPTION	✓		✓	✓		
ST8110SR-UK		✓	✓	9	✓	✓	✓	✓	✓	✓	✓	✓	✓	✓		OPTION	OPTION					
ST8916S	✓	✓		11	✓		8 FULLY CONFIGURABLE INPUTS & LAP-TIMING. CHOOSE PULSE OR 0-5V ANALOG SENSORS (NOT INCLUDED)								✓	OPTION	OPTION		OPTION			

* See Performance Features section above for more information.



Download a QR Reader app to
your smartphone to scan our
code for more information from
our website.

www.stackltd.com

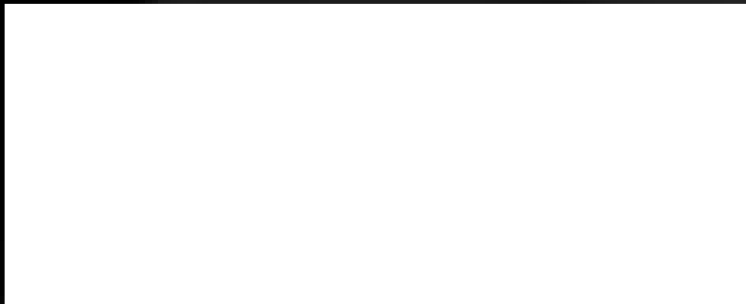
www.stackinc.com

Stack Ltd
Bicester, Oxon OX26 4UL,
UK

Tel: +44 (0)1869 240404
Fax: +44 (0)1869 245500
Email: sales@stackltd.com

Stack Inc.
Sycamore, IL. 60178,
USA

Tel: 888 867 5183
Fax: 888 364 2609
Email: sales@stackinc.com



In the interests of continuous product improvement, we reserve the right to alter without notice the specifications and features described in this leaflet.
This leaflet shall not form part of a contract involving Stack unless stated in writing.